

**Interreg**



EUROPEAN UNION

**2 Seas Mers Zeeën**

**PROWATER**

European Regional Development Fund



**A Dutch translation of the PROWATER philosophy: natural water-landscapes as the guiding principle for spatial (re-)development.**

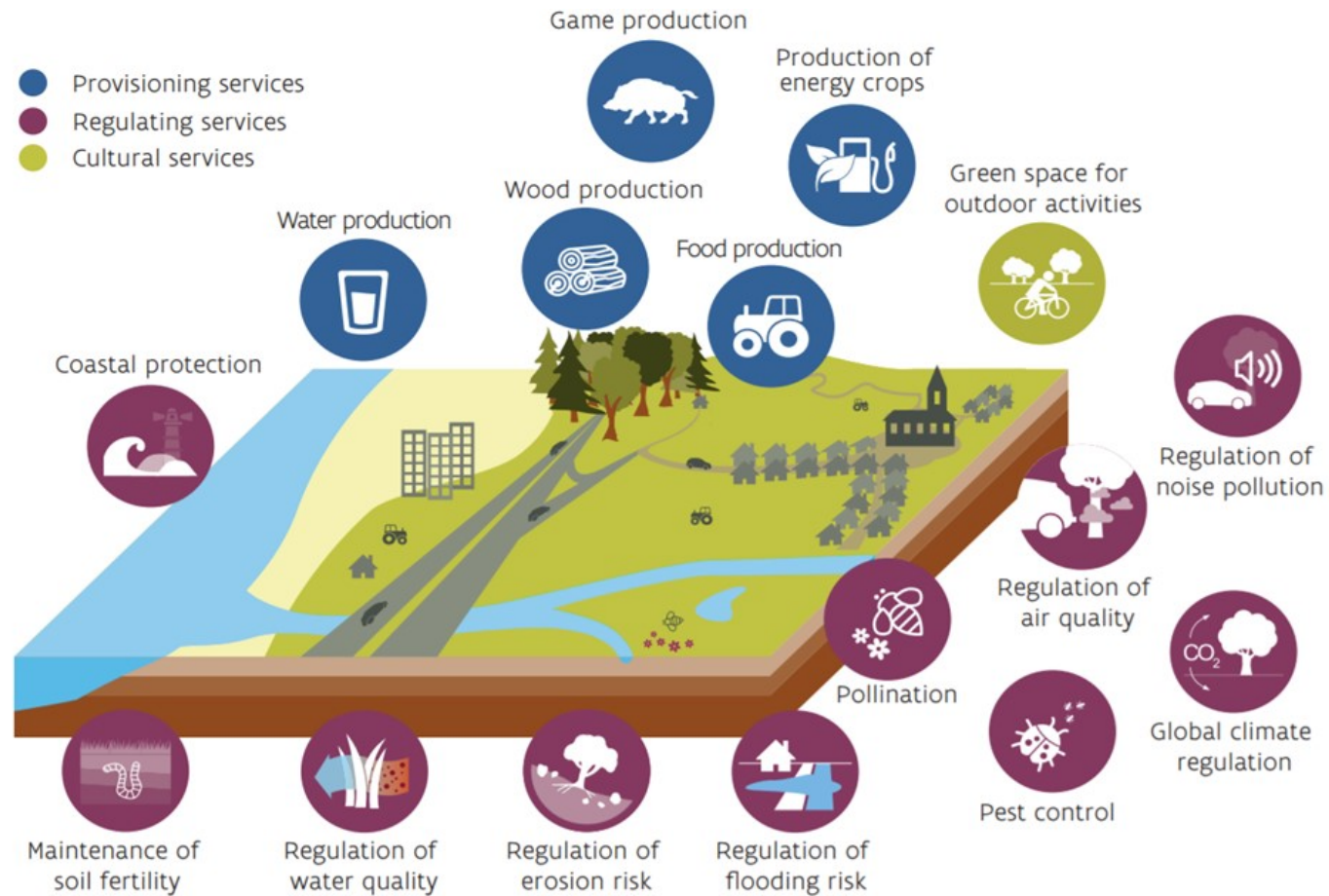
**Leo Santbergen (Brabantse Delta Water Board)**

**Antwerp, End Event, 12 October 2022**

# Dutch transition approach for rural areas

- ❑ Multiple-issue transition approach national government:
  - National Programme Rural Areas (climate, energy, water-land-nature, sustainable farming)
  - Urbanisation Agenda
  
- ❑ North-Brabant Province: regional translation with multiple stakeholders:
  - 2027-2030: Natura 2000, Nature Network Brabant and water Framework Directive
  - 2050: climate adaptive urban and rural water-landscapes
  
- **Essential: new, fair price revenue and income models based on ecosystem services**

# Integrate ecosystem services in a sustainable financing model



# Guided integral transition of the countryside (climate, land-water, energy)

Water Framework Directive, Nitrates Directive, Nitrogen crisis and Natura 2000

Tackling peak loaders (e.g. N, P)

Land and water use restrictions by spatial instruments and permits

Land use reallocation instruments

2027-2030

2040-2050

**At present (A):**  
degraded nature,  
water availability  
and agriculture

Areal optimization  
plan (July 2023)

Halfway climate-  
adaptive water-  
landscapes

Full transition stage

**Desired future (B):**  
sustainable  
(circular) farming  
in balance with  
climate-adaptive  
water-landscapes

Compensation for net  
depreciation-income loss  
due to restrictions

Infiltration, retention,  
river restoration & wastewater  
treatment

Temporary (financial) aid for direct income loss

Transition towards (more) sustainable farming

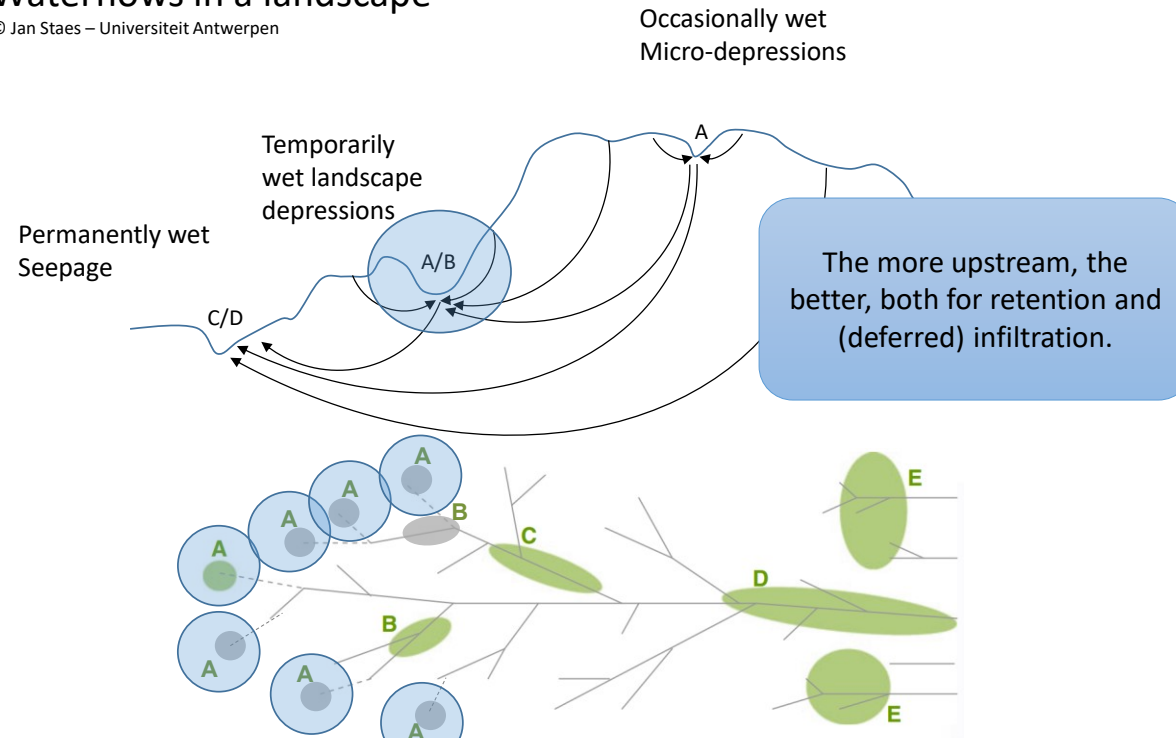
Payment for blue-green ecosystem services  
(e.g. CAP financing)

Operational new fair price revenue and farmers income  
models (e.g. based on ecosystem services)

# A holistic approach: the PROWATER A-B-C

## Waterflows in a landscape

© Jan Staes – Universiteit Antwerpen



But in those areas there is seldom or never any flooding. That is why the vision of local water management is still often focused on dewatering. These temporarily wet areas are easy to drain and excellent agricultural land.

2

# The PROWATER A-B-C in Brabant (1)

Huidig functioneren

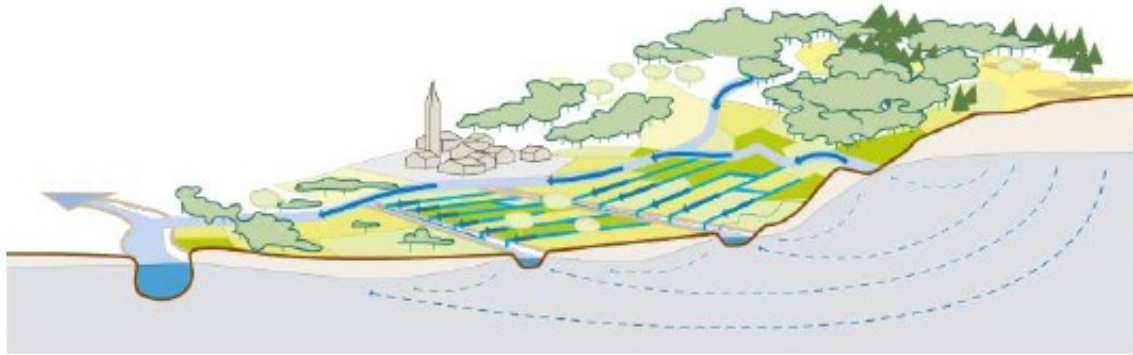


Fig. 4 Schematische verbeelding van het huidige functioneren van het watersysteem in Noord-Brabant

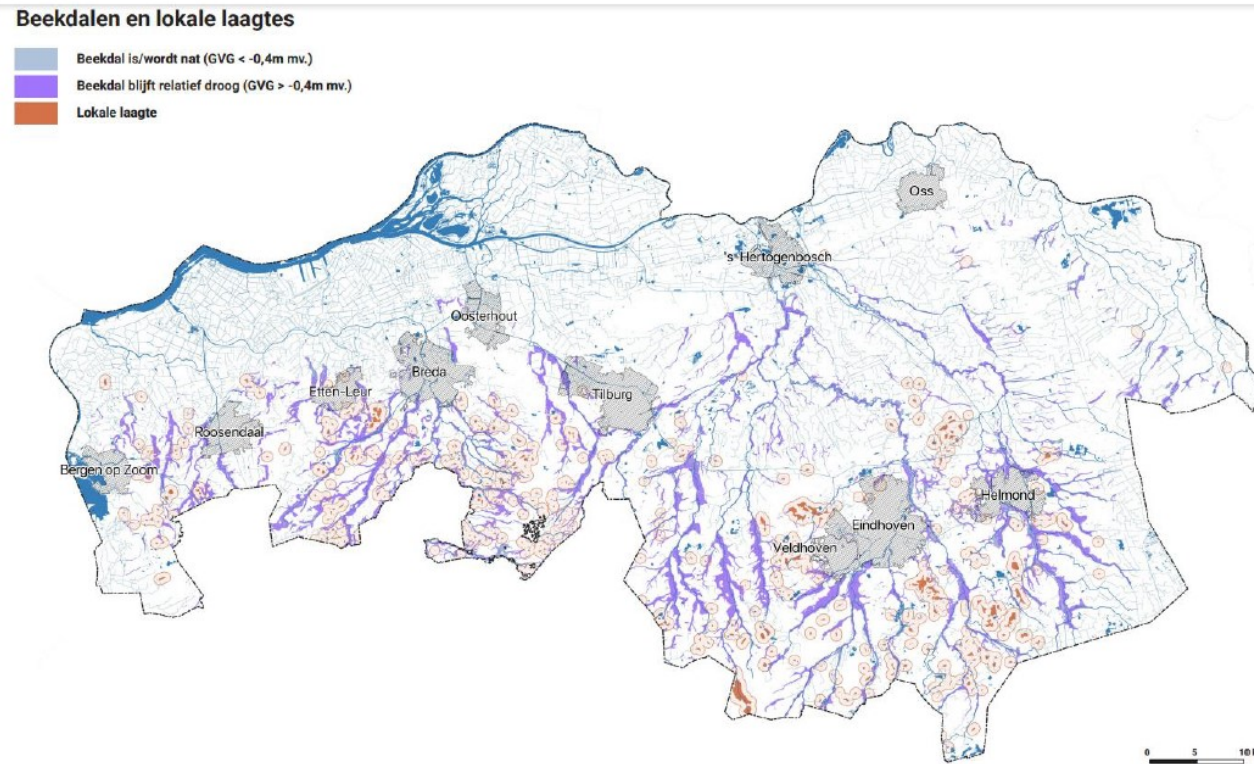
Toekomstperspectief



Fig. 5 Schematische verbeelding van het toekomstperspectief voor het functioneren van het watersysteem in Noord-Brabant

*Afbeelding 2: Huidig functioneren en toekomstperspectief (Bron: RUIMTELIJK BEELD WATERTRANSITIE, EEN VERKENNING VOOR NOORD-BRABANT, H+N+S Landschapsarchitecten, 15 juli 2022)*

# The PROWATER A-B-C in Brabant (2)



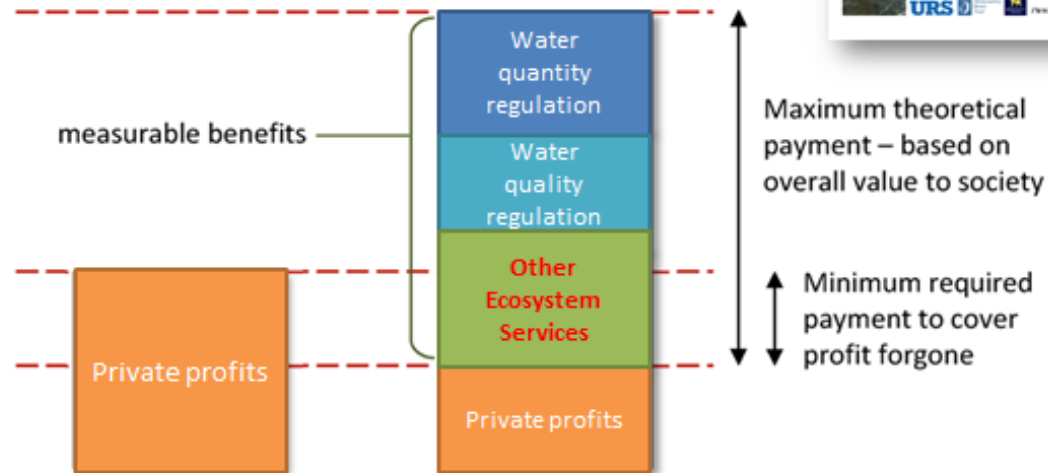
Afbeelding 10: Beekdalen en lokale laagtes (Bron: RUIMTELIJK BEELD WATERTRANSITIE, EEN VERKENNING VOOR NOORD-BRABANT, H+N+S Landschapsarchitecten, concept 15 juli 2022)

# The British PES-Experience



Land managed  
for agricultural  
production

Payments for multi-  
service provision:  
land use change



<http://www.gov.uk/government/publications/payments-for-ecosystem-services-pes-best-practice-guide>



# Conclusion

- ❑ Multiple transition: opportunity - challenge for 'climate-adaptive water-landscapes' in the Flemish-Dutch Kempen Region.
- ❑ The PROWATER A-B-C as basic philosophy
- ❑ Momentum to ENFORCE Flemish-Dutch cooperation
- ❑ Further elaborate PES-like arrangements to guide the transition
- ❑ Water Boards play a key-role in the water transition part: infiltration, retention, river restoration & wastewater treatment