

**Interreg**   
EUROPEAN UNION

**2 Seas Mers Zeeën**

**PROWATER**

European Regional Development Fund



**Flanders**  
State of the Art

## Interactive session

Mapping opportunities to contribute to Payment for Ecosystem Services schemes with PROWATER's lessons learnt

Katherine Vande Velde, Departement Omgeving - [katherine.vandavelde@vlaanderen.be](mailto:katherine.vandavelde@vlaanderen.be)

Freya Stacey, Westcountry Rivers Trust - [freya@wrt.org.uk](mailto:freya@wrt.org.uk)

# PROWATER's OUTPUT 2 :

“Developing rewarding schemes for Nature-based Solutions”

## Practice and policy recommendations base on:

- Experience within the partnership through Interreg projects such as Triple C and CPES
- Workshops, Conferences and the Panel discussion organised by PROWATER
- Experience of some of the PROWATER demonstration sites



*Expected to be delivered by the end of this month*



Future prospects on private & public payment schemes for Nature-based Solutions targeted at increased infiltration and retention of rainwater.

Ecosystem based Adaptation measures (a Nature based approach to climate adaptation) need to be taken on both public and private land. However, most landowners will not implement them voluntarily (additional to what is required by law) without financial incentives.

And expert panel discussion

Based on the PROWATER panel discussion with international experts (16 October 2021), this report reflects on various factors and pitfalls when designing and implementing payment schemes for EBA measures targeted at increased infiltration and retention of rainwater across landscapes.

Many of the practice recommendations are targeted at local initiatives that wish to set up a local PES scheme for EBA, targeted at infiltration and retention of rainwater. Although we also acknowledge the important role of larger scale payment schemes to generate large scale changes in management (e.g. integrated within the CAP greening measures). There are also important messages for (inter)national policy makers. Current policy and legislation can complicate the establishment of EBA PES.

Project partners will build on in this report to deliver Output 2 'Developing rewarding schemes for Nature-based Solutions, specifically targeted at (but not limited to) increased infiltration and retention of rainwater', expected in October 2022.



[https://www.prowater.eu/sites/default/files/2021-11-17\\_Future%20prospects%20on%20private%20and%20public%20land%20owners%20and%20policy%20makers.pdf](https://www.prowater.eu/sites/default/files/2021-11-17_Future%20prospects%20on%20private%20and%20public%20land%20owners%20and%20policy%20makers.pdf)

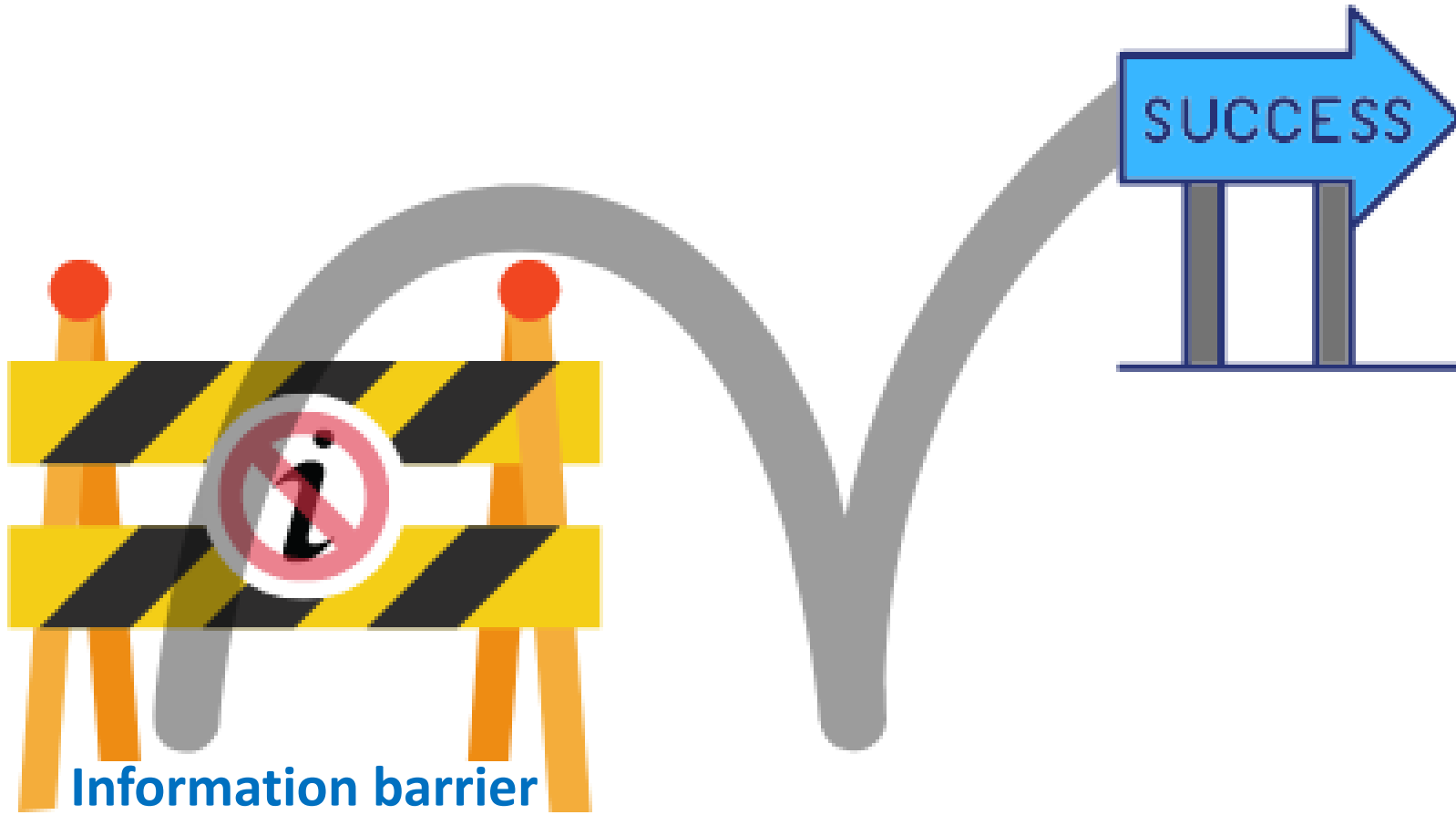
### A cross-border cooperation

From November 2017 to March 2022, 30 partners from Flanders, the Netherlands and the United Kingdom work together on PROWATER. The project has a budget of more than 5.5 million euros. In each country, water production companies, governments and research institutes as well as land managers are involved in order to achieve a supported vision for Ecosystem-based Adaptation.

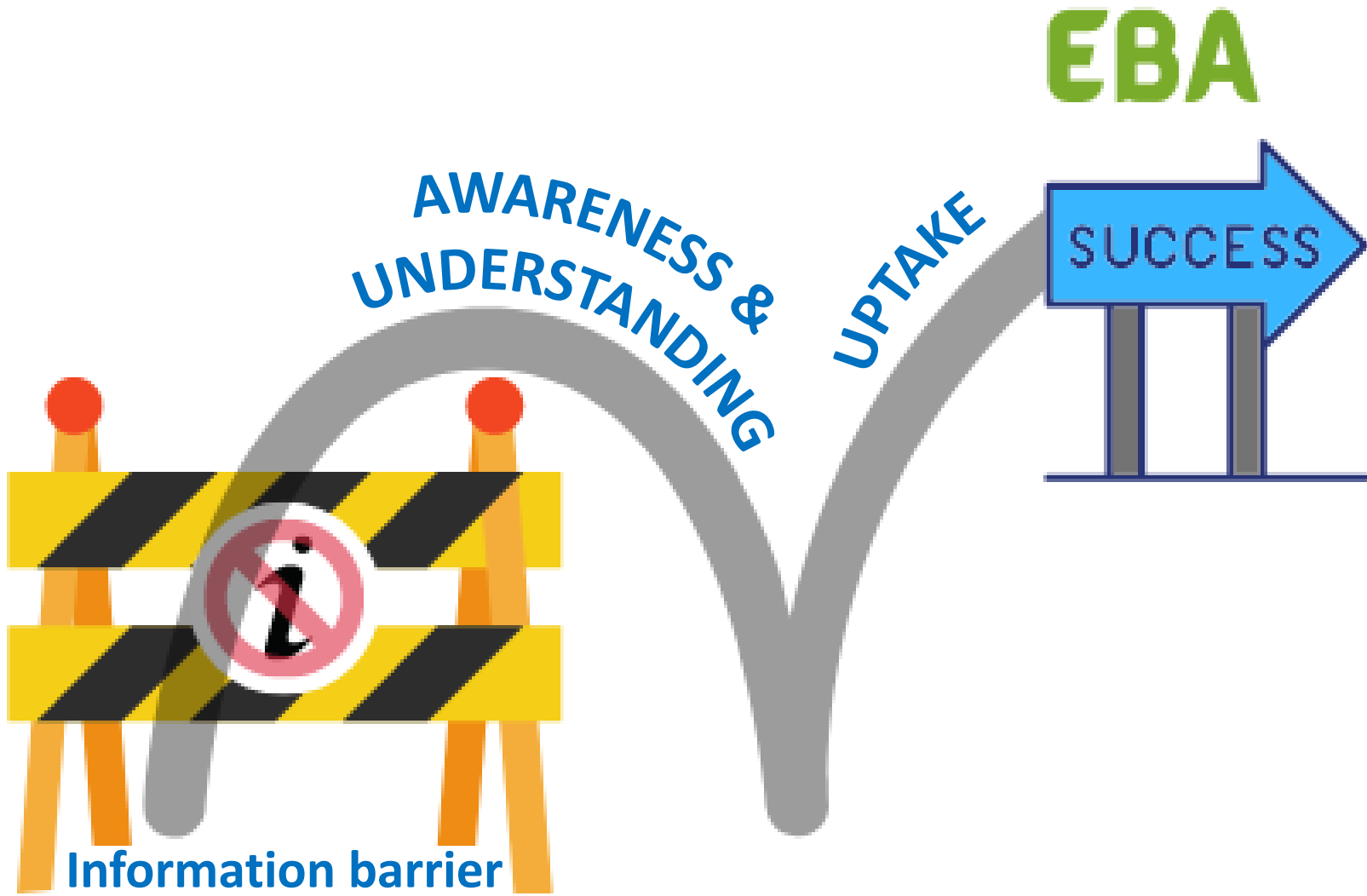
The project PROWATER receives 3.212.074 € through the Interreg 2 Seas Land, co-funded by the European Regional Development Fund (ERDF), to work on climate change adaptation and to increase resilience against droughts and extreme precipitation based on ecosystem services. Interreg 2 Seas is a European territorial cooperation programme for the United Kingdom, France, the Netherlands and Belgium (Flanders).

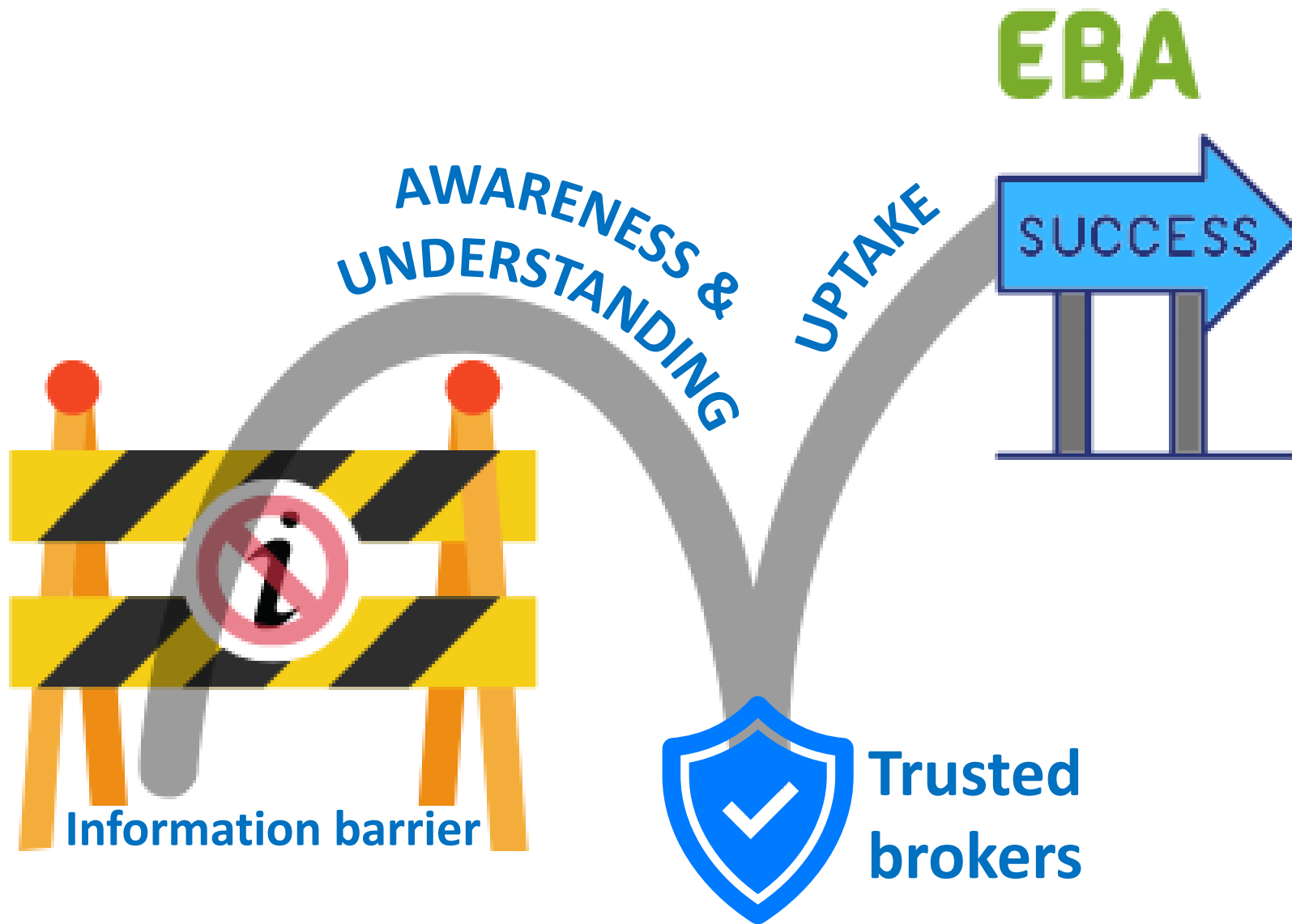


# EBA



Information barrier







True custodians



Trust



Financial incentive

**EBA**





True custodians



Trust



Financial incentive



Mike & Jan Bax – Moat Farm  
River Beult site, UK





True custodians



Trust



Financial incentive



James Loder-Symonds - Nonington Farms  
Little Stour site, UK





# PROWATER's OUTPUT 2 :

## “Developing rewarding schemes for Nature-based Solutions”

### Based on practice & policy recommendations :

- Set up new initiatives
- Facilitate new collaborations & initiatives
- Inspire existing collaborations & initiatives

### For the implementation of NbS, in collaboration with landowners



*Expected to be delivered by the end of this month*

OUTPUT 2 - Developing rewarding schemes for Nature-based Solutions, specifically targeted at (but not limited to) increased infiltration and retention of rainwater.



Future prospects on private & public payment schemes for Nature-based Solutions targeted at increased infiltration and retention of rainwater.

Ecosystem based Adaptation measures (a Nature based approach to climate adaptation) need to be taken on both public and private land. However, most landowners will not implement them voluntarily (additional to what is required by law) without financial incentives.

And expert panel discussion

Based on the PROWATER panel discussion with international experts (16 October 2021), this report reflects on various factors and pitfalls when designing and implementing payment schemes for EBA measures targeted at increased infiltration and retention of rainwater on private land.

Many of the practice recommendations are targeted at local initiatives that wish to set up a local PES scheme for NbS, targeted at infiltration and retention of rainwater. Although we also acknowledge the important role of larger scale payment schemes to generate large scale changes in management (e.g. segregated within the CAP greening measures). There are also important messages for (inter)national policy makers. Current policy and legislation can complicate the establishment of EBA PES.

Project partners will build on its report to deliver Output 2 'Developing rewarding schemes for Nature-based Solutions, specifically targeted at (but not limited to) increased infiltration and retention of rainwater', expected in October 2022.



[https://www.prowater.eu/sites/default/files/2022-09/01\\_2.1\\_Future%20prospect%20targeted%20for%20NbS%20targeted%20at%20infiltration%20and%20retention.pdf](https://www.prowater.eu/sites/default/files/2022-09/01_2.1_Future%20prospect%20targeted%20for%20NbS%20targeted%20at%20infiltration%20and%20retention.pdf)

**A cross-border cooperation**

From November 2017 to March 2022, 30 partners from Flanders, the Netherlands and the United Kingdom work together on PROWATER. The project has a budget of more than 5.5 million euros. In each country, water production companies, governments and research institutes as well as land managers are involved in order to achieve a supported vision for Ecosystem-based Adaptation.

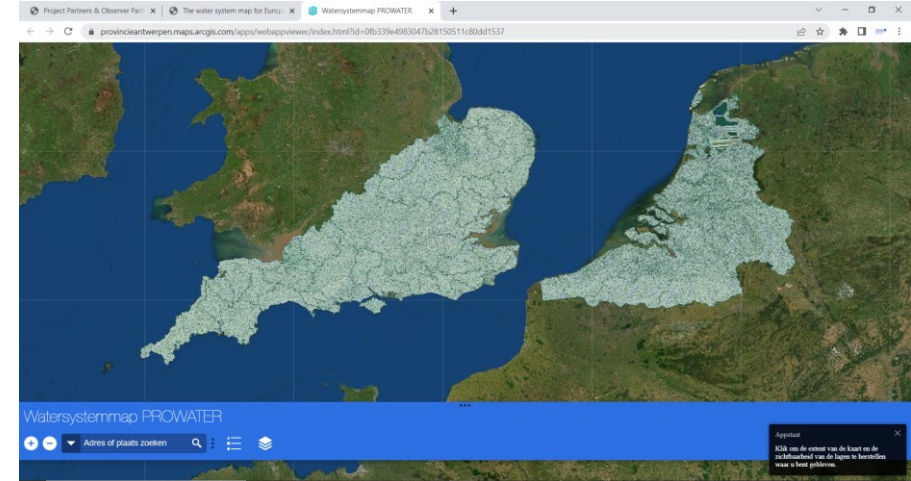
The project PROWATER receives 3.225.074 € through the Interreg 2 Seas Land, co-funded by the European Regional Development Fund (ERDF), to work on climate change adaptation and to increase resilience against droughts and extreme precipitation based on ecosystem services. Interreg 2 Seas is a European territorial cooperation programme for the United Kingdom, France, the Netherlands and Belgium (Flanders).



# Practice Recommendations

## Small & Medium Payment schemes

- Look into applications of the PROWATER toolbox, developed by the University of Antwerp to help target funding towards landowners and locations with the largest expected impact on infiltration and retention of rainwater
- Build on to existing water quality Payment schemes, to integrate water quantity services such as infiltration and retention of rainwater



**For more information:**

<https://www.pro-water.eu/developing-rewarding-schemes-for-nature-based-solutions>



# Practice Recommendations

## Large scale Payment schemes

- Can generate large scale changes in management (e.g. EU CAP & greening measures included)
- Deserve a critical review to ensure investments result in ESS delivery
- Where possible, take into account the geophysical context to make sure qualitative measures are implemented in the right locations



CAP Common Agricultural Policy:

[https://eu-cap-network.ec.europa.eu/index\\_en](https://eu-cap-network.ec.europa.eu/index_en)

**For more information:**

<https://www.pro-water.eu/developing-rewarding-schemes-for-nature-based-solutions>



# Policy Recommendations

## Government funded Payment schemes

- Outdated regulation needs to be updated to match the ambitious climate adaptation objectives
- (temporary?) flexibility for projects contributing to EU climate adaptation objectives



For more information:

<https://www.pro-water.eu/developing-rewarding-schemes-for-nature-based-solutions>



# Interactive session

## Mapping opportunities

Interreg   
2 Seas Mers Zeeën  
PROWATER  
European Regional Development Fund

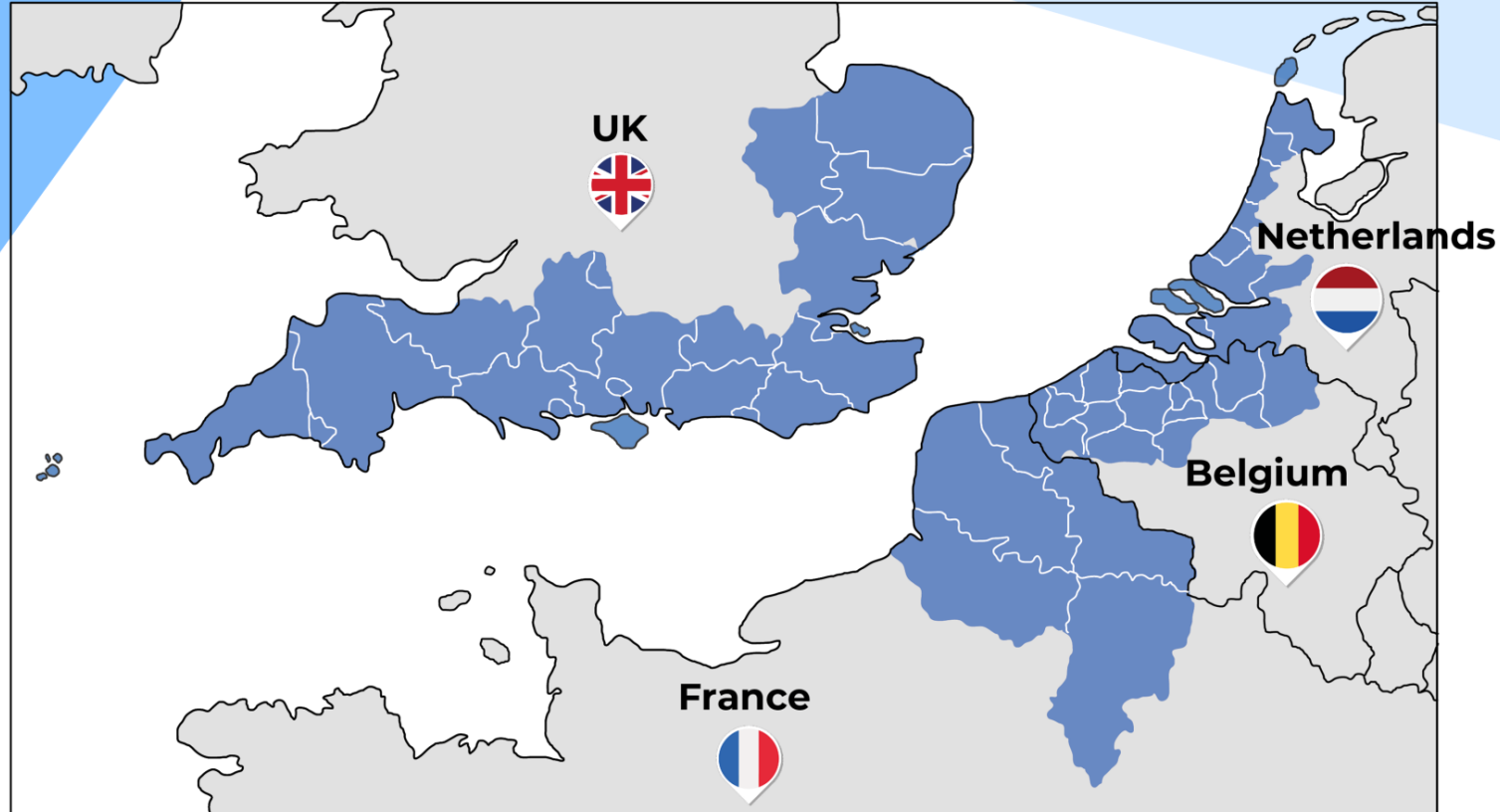
This map is also available in an online format.  
You can access it here [shorturl.at/eIP39](https://shorturl.at/eIP39)  
*(best used on a laptop, not a mobile phone)*

Mapping opportunities to contribute to Payment for Ecosystem Services projects/programmes/schemes with PROWATER's lessons learnt

Please write down opportunities onto a note & stick it on to the region of the map that applies.

Please include the following information on your note:

- Whether the action is current or potential in the future
- The region/scale the action applies to

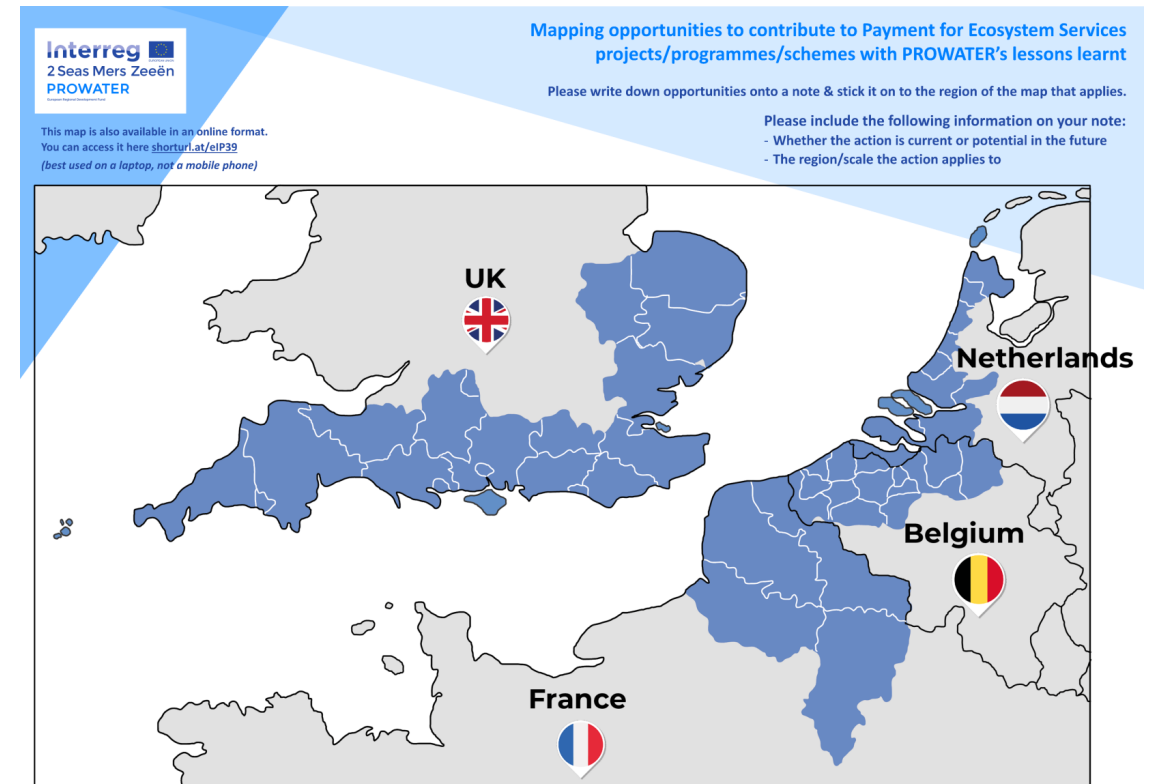
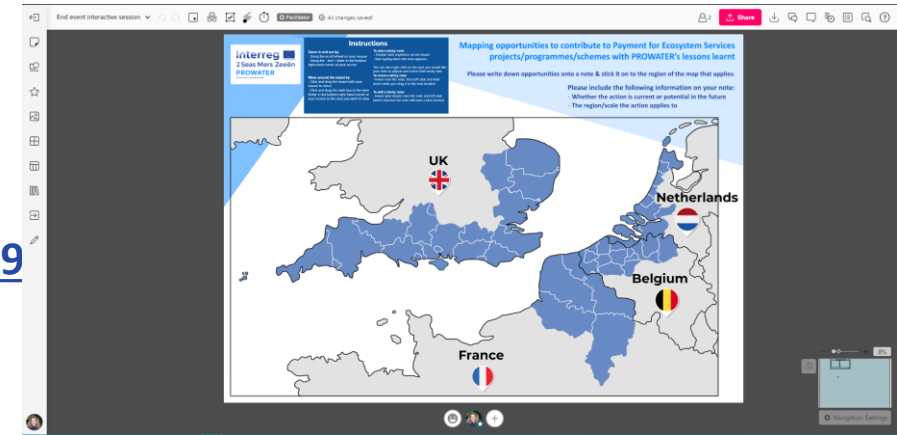


# Interactive session

## Mapping opportunities:

- Funding programmes for Nature-based Solutions targeted at multiple ecosystem services (not solely water quality ESS)
- Projects that focus on drought mitigating measures and/or flood risk management, in collaboration with land owners
- Programmes and schemes working to facilitate stacked payments for farmers/landowners
- Opportunities in payment schemes for use of the PROWATER water system map and other tools developed

Online version  
[shorturl.at/eIP39](https://shorturl.at/eIP39)



# Interactive session

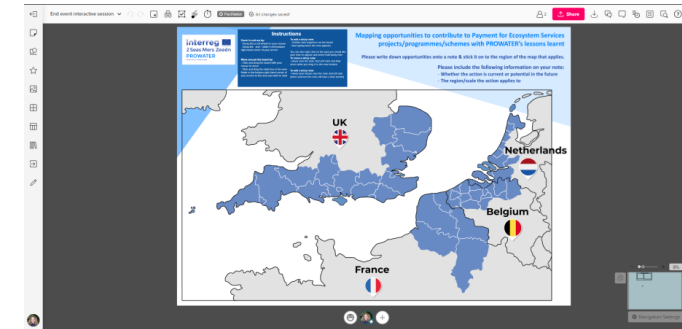
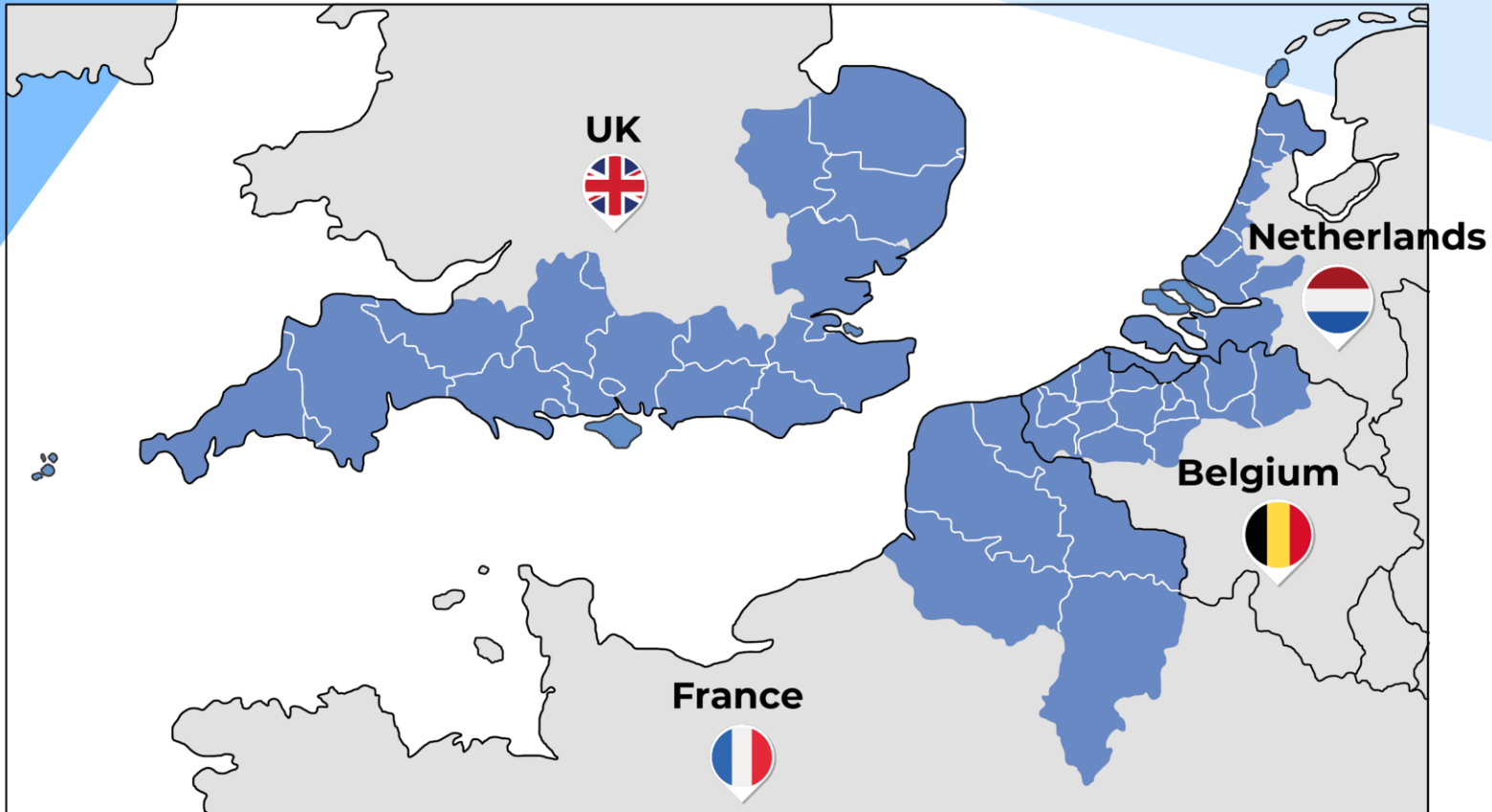
Interreg  
2 Seas Mers Zeeën  
PROWATER  
European Regional Development Fund

This map is also available in an online format.  
You can access it here [shorturl.at/eIP39](https://shorturl.at/eIP39)  
(best used on a laptop, not a mobile phone)

Mapping opportunities to contribute to Payment for Ecosystem Services projects/programmes/schemes with PROWATER's lessons learnt

Please write down opportunities onto a note & stick it on to the region of the map that applies.

Please include the following information on your note:  
- Whether the action is current or potential in the future  
- The region/scale the action applies to



Online version [shorturl.at/eIP39](https://shorturl.at/eIP39)

*Please include:*

- Whether the action is current or potential in the future
- The region/scale the action applies to


*On your note*

# Interactive session

Online version  
[shorturl.at/eIP39](https://shorturl.at/eIP39)

End event interactive session | Facilitator | All changes saved!

2 | Share | [Download] | [Comment] | [List] | [Search] | [Help]



Interreg  
2 Seas Mers Zeeën  
PROWATER

### Instructions

**Zoom in and out by:**  
- Using the scroll wheel on your mouse  
- Using the + and - slider in the bottom right-hand corner of your screen

**Move around the board by:**  
- Click and drag the board with your mouse to move  
- Click and drag the dark box in the view finder in the bottom right hand corner of your screen to the area you wish to view

**To add a sticky note:**  
- Double click anywhere on the board  
- Start typing when the note appears

**You can also right click on the spot you would like your note to appear and select Add sticky note**

**To move a sticky note:**  
- Hover over the note, then left click and hold down while you drag it to the new location

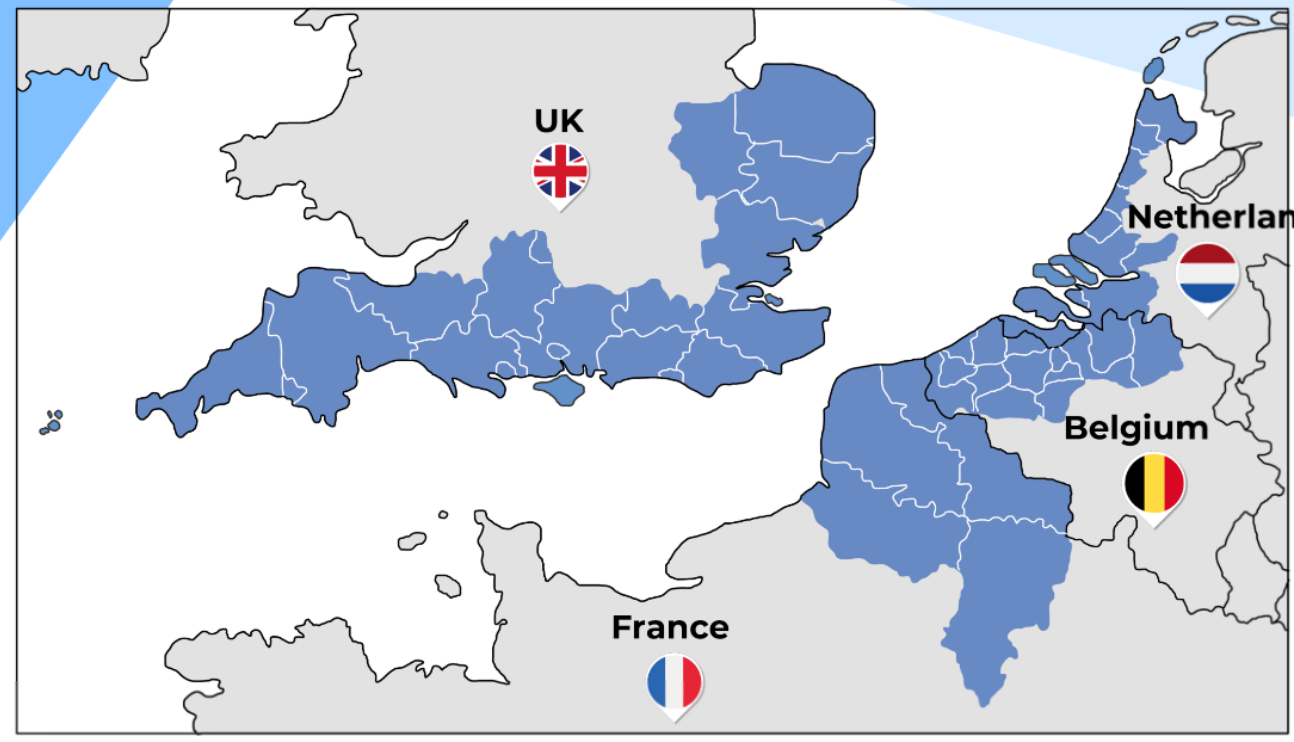
**To edit a sticky note:**  
- Hover your mouse over the note and left click (when selected the note will have a blue border)

## Mapping opportunities to contribute to Payment for Ecosystem Services projects/programmes/schemes with PROWATER's lessons learnt

Please write down opportunities onto a note & stick it on to the region of the map that applies.

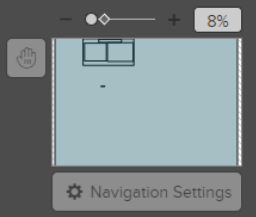
Please include the following information on your note:

- Whether the action is current or potential in the future
- The region/scale the action applies to



The map shows the United Kingdom, Netherlands, Belgium, and France highlighted in blue. Each country is labeled with its name and a flag icon. The map is divided into regional boundaries.

8%



Navigation Settings

