

Interreg



EUROPEAN UNION

2 Seas Mers Zeeën

PROWATER

European Regional Development Fund



south east water

An English translation of the PROWATER philosophy - Targeting nature recovery for resilient catchments.

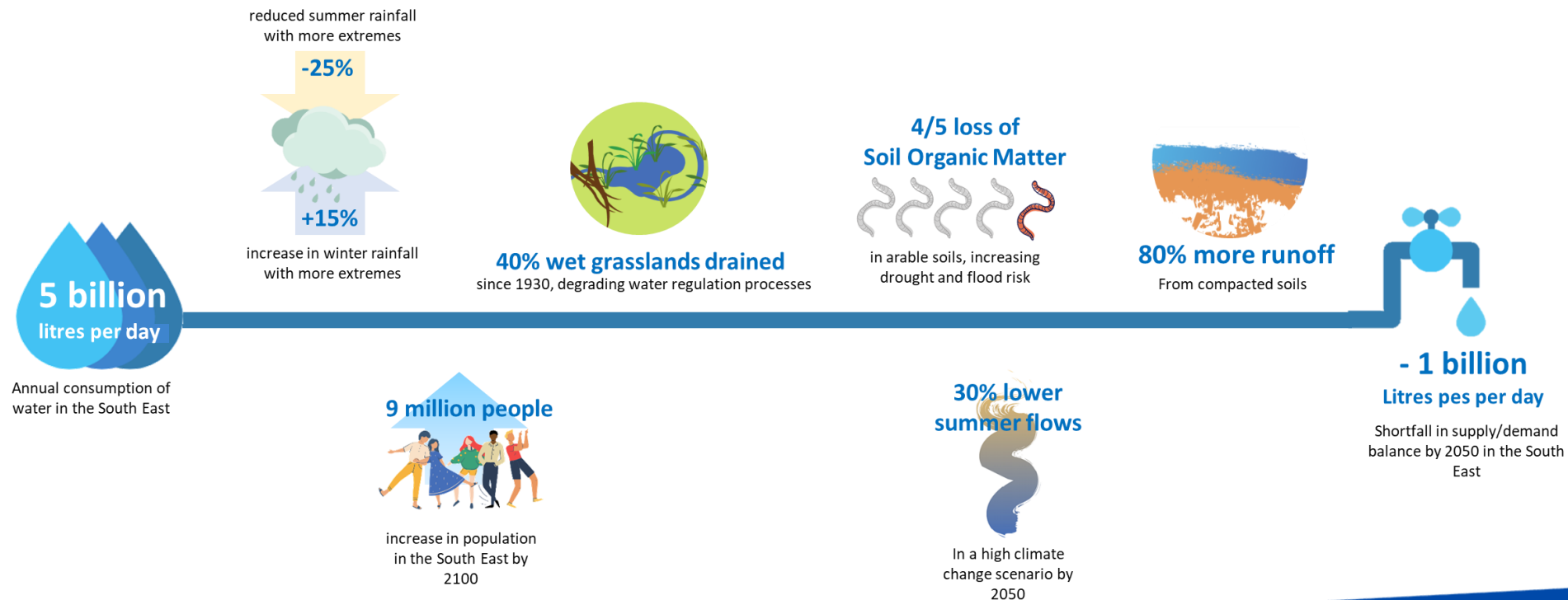
Kathi Bauer, South East Rivers Trust - kathi@southeastriverstrust.org

Freya Stacey, Westcountry Rivers Trust – freya@wrt.org.uk

Debbie Wilkinson, South East Water - Debbie.Wilkinson@southeastwater.co.uk

Our catchments are struggling to provide the benefits we rely on.

- Poor water quality from runoff, pesticides, fertilisers, sewage effluent, spills
- Low flows affecting wildlife & water resources
- Physical modification



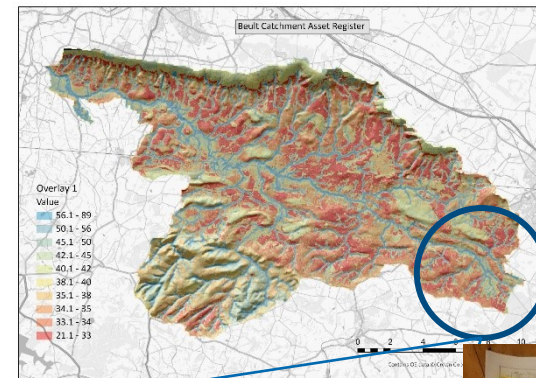
There is not enough public funding committed to help nature recover.

- **Government subsidies are changing: new Environmental Land Management Schemes are set to replace the EU CAP**
 - Sustainable Farming Incentive: best practice approaches
 - Local Nature Recovery: NbS for water, local delivery
 - Landscape Recovery: collective approach to landscape-scale change
- **56 billion GBP private funding is needed to meet our nature-related aims**
 - Government relies on private funding to supplement govt schemes
 - There is a shortfall in public funding committed
 - A range of private investment or funding schemes are being trialled and developed to meet this need
 - Funding comes from water companies, carbon or nutrient offsetting, biodiversity payments from development and others, including CSR



South East Rivers Trust are co-developing a scheme in the Beult catchment to restore a resilient catchment and water supply.

- Private funding to deliver NbS at a sub-catchment scale
 - 10km of river corridor
 - 18 ha of NbS
- Measures targeted & co-designed with landowners
 - PROWATER + targeting approach
 - Start with catchment needs & vision
- Water resources as primary benefit, plus biodiversity, water quality, recreation
 - Catchment resilience rather than single-issue
 - Focus on natural capital & condition it is in
- Payment rates set through impact assessment and negotiation
- Confidence in landowner uptake and ability to adapt scheme
- Local advice & support, strong stakeholder partnership



Restore lost habitats and functions in key locations

Enhance valuable habitats in poor condition

Sustainable income stream through environmental objectives

Increase biodiversity

Measures reduce flood risk

Housing Development (BNG) Local Authorities & communities

Financial & regulatory drivers

Neighbouring land owners – Upper Beult Farm Cluster

At risk from sediment, nutrient, pesticides & low flows

River feeds public water supply abstraction

Public Water Supply Company – Southern Water

Financial & regulatory drivers

*Co-design of parameters & measures
Broker and distribute (?) funding
Provide advice & support
Support development of catchment vision*

*Targeting & quantification approach
Local & NbS knowledge*

Local Advisor – South East Rivers Trust

Develop relationships and support targeting for investment

NATURAL ENVIRONMENT INVESTMENT READINESS FUND

South East Water

PROWATER case studies have provided the scientific evidence and knowledge for successful Nature Based Solutions/Eco-system based Adaptation measures that can be built upon.

Our plan to utilise the knowledge from PROWATER into water resource and water quality planning (e.g. WINEP / WRMP) for long-term catchment resilience for water provisions, whilst protecting and enhancing the environment and biodiversity. The outcomes of PROWATER also supports objectives in our 25 Year Environment Plan.

Key future projects include:

- up-scaling the Little Stour demonstration site to the wider Stour catchment through our Chalk Stream Flagship project, and;
- the development of a super National Nature Reserve.



Super National Nature Reserve (Seaford and Eastbourne)

Proposal to extend our PROWATER approach across the Seaford and Eastbourne Groundwater Chalk Block – creating the first self-sustaining super National Nature Reserve (sNNR) for the protection of groundwater quantity and quality in England (covering approx. 12,402 ha).

- NNRs are a statutory designation (for >30 years) established by Natural England – NE are beginning planning now for designation from March 2024.
- Core purpose is to link nature conservation, science and people.
- Development and measures will involve co-designing with landowners, ongoing committed partnership of NNRs managing bodies and shared partnership vision and management framework for NNR.



Westcountry Rivers Trust - using PROWATER to shift perceptions in the South West: water resources are a challenge.

1. Awareness raising and developing a shared understanding of the problem – broadening stakeholder focus from just water quality and flooding to include water resources issues...





160 SIGN-UPS
130 ATTENDEES
30 CHAMPIONS
6 EXHIBITS
160 QUESTIONS
1 'HUB'





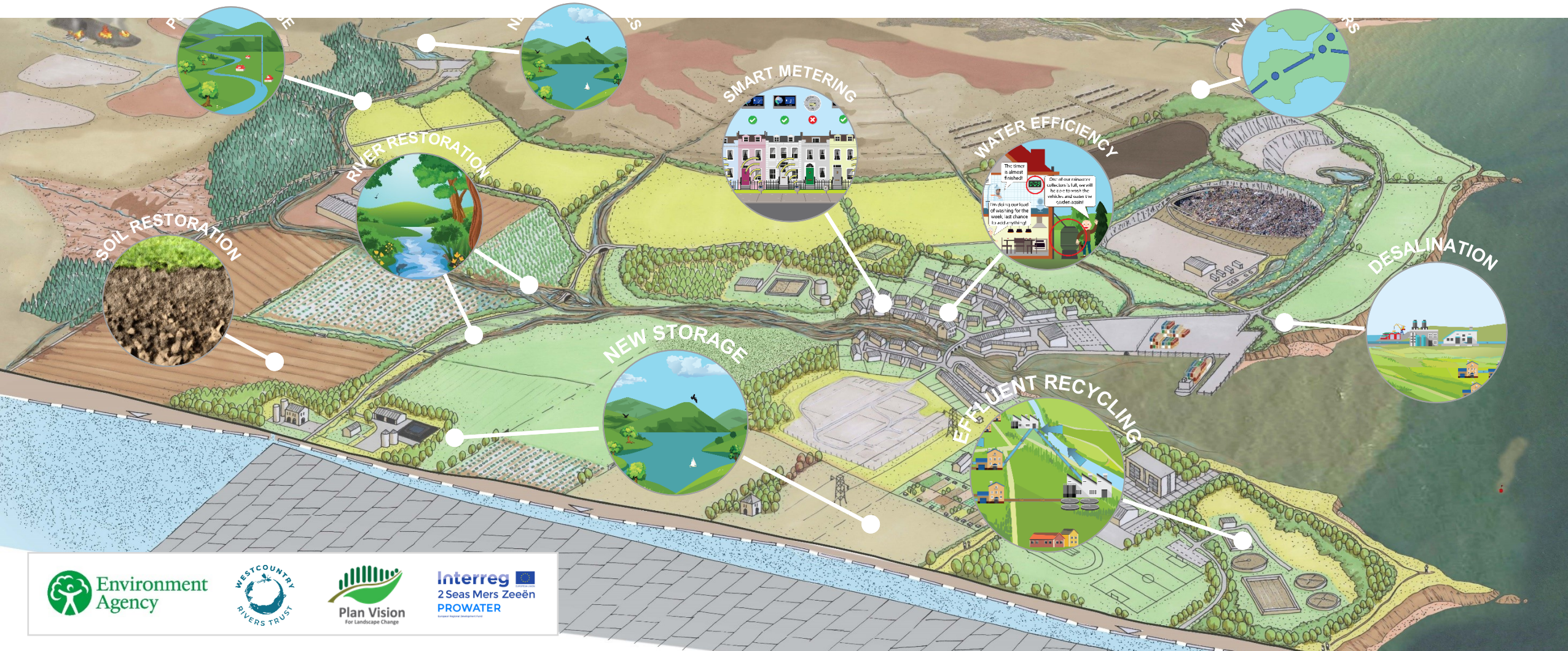
Westcountry Rivers Trust - using PROWATER to shift perceptions in the South West

1. Awareness raising and developing a shared understanding of the problem – broadening stakeholder focus from just water quality and flooding to include water resources issues...
2. Developing a shared understanding of the solutions to the water resources challenges in the South West, determining the contribution that EbA/NBS can make, and building capacity to deliver them.



Putting it all together...

A holistic, collaborative & adaptive approach





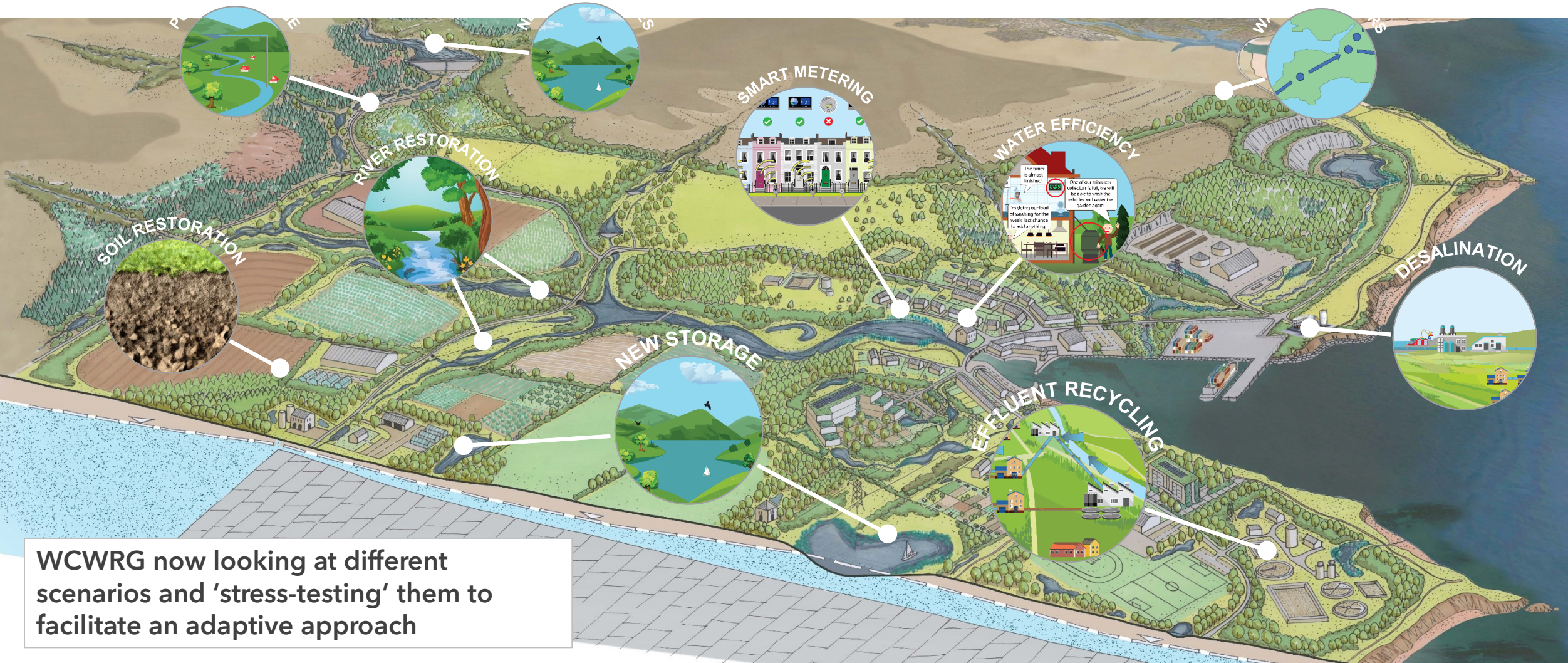
Westcountry Rivers Trust - using PROWATER to shift perceptions in the South West

1. Awareness raising and developing a shared understanding of the problem – broadening stakeholder focus from just water quality and flooding to include water resources issues...
2. Developing a shared understanding of the solutions to the water resources challenges in the South West, determining the contribution that EbA/NBS can make, and building capacity to deliver them.
3. Active participation in the co-design of the South West Water and West Country Water Resources management plans



Putting it all together...

A holistic, collaborative & adaptive approach



WCWRG now looking at different scenarios and 'stress-testing' them to facilitate an adaptive approach

